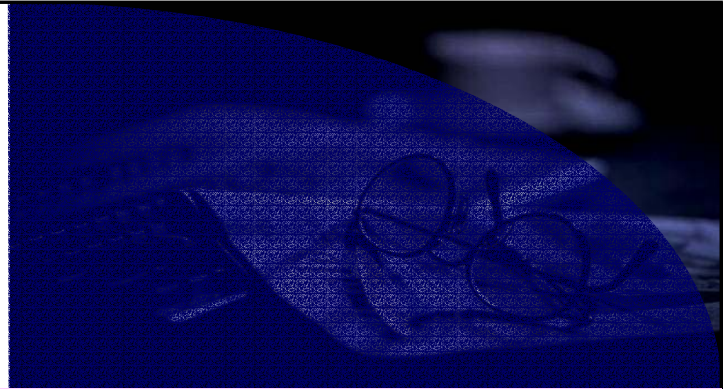


assessment for learning

year 7...mark scheme



Science Interactive LTD. PO BOX 50764 LONDON NW6 9AT

web: [www: science-interactive.co.uk](http://www.science-interactive.co.uk)

7B Reproduction...mark scheme

Assessment for learning...year 7 (level 3-6)

Question 1:

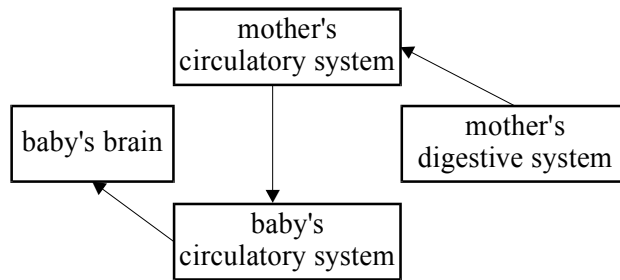
- (a) (i) the uterus **or** womb 1
- (ii) the lung **or** lungs 1
do not accept 'air sac'
-
- (b) transport of blood **or** correctly named substance in the blood 1
*accept 'moves **or** circulates blood'*
*accept 'defence against disease' **or** 'helps regulate body temperature'*
- digestive **or** digestion 1
*do not accept 'gut' **or** 'intestines'*
-
- (c) any **one** from 1
- gives support
 - gives shape
 - protects internal organs
 - allows movement
 - anchorage **or** attachment for muscles
 - produces blood cells

[5]

Question 2:

(a)

1

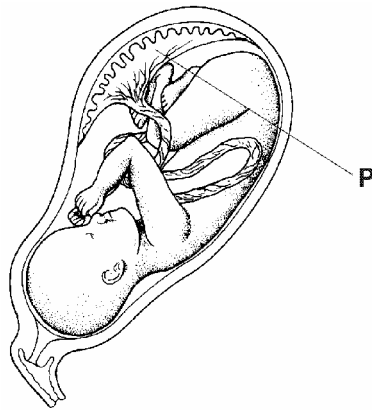


*all **three** arrows required for the mark*

accept lines provided at least one arrowhead is shown

(b) placenta labelled correctly

1



the line from P must end within the shaded area

accept P written directly on the diagram provided it is entirely within the placenta

(c) any **two** from

2

- to give oxygen to the baby
*do **not** accept 'to allow the baby to breathe'*
- to remove carbon dioxide
- to provide nutrients
accept 'to pass food to the baby' or 'to feed the baby'
- to remove waste
accept 'to produce hormones'

(d) any **one** from

1

- cushions baby
accept 'protects baby'
- protects baby from bumps
*do **not** accept 'protects baby from disease'*
- supports baby

*do **not** accept 'insulates baby' **or** 'helps baby to be born'*

- allows baby to move

[5]

Question 3:

(a)

- a monthly
- the uterus

1

1

accept 'uterus'

- an ovary

1

accept 'ovary'

- the middle

1

(b) any **two** from

2

- voice becomes deeper
- increase in facial hair
- increase in body hair

*accept 'voice breaks **or** changes'*

accept 'grows a beard'

*accept 'growth of pubic hair **or** hairy chest **or** hair in armpits'*

- growth of penis
- growth of testes **or** testicles
- start to produce sperm
- growth spurt

accept 'rapid growth'

*do **not** accept 'growth' **or** 'gets taller'*

*accept 'development of more adult body shape' **or** a description of a more adult body shape, such as 'wider shoulders' accept 'sweats more'*

[6]

Question 4:

(a) any **one** from

1

- has tail **or** flagellum
- it is streamlined

accept 'it has a pointed head'

accept 'it only contains half the number of chromosomes'

(b) cilia move **or** push the egg

1

accept 'to waft the egg along'

- (c) any **three** from 3
- from the mother's intestine
accept 'through the mother's gut'
 - carried in the mother's blood
 - through the placenta
 - into the blood of the foetus
 - along the umbilical cord
- [5]**

Question 5:

- (a) (i) one is more active 1
- accept 'one does sport or plays football'*
- accept 'they have different metabolic rates'*
- accept 'one works harder or does more work'*
- (ii) carbohydrates 1
- answers may be in either order*
- accept a named carbohydrate, eg 'sugar' or 'glucose' or 'starch'*
- fats 1
- (b) (i) 300 1
- (ii) any **one** from 1
- a boy's bones **or** teeth are still growing
accept '15 year-old male is growing or still developing'
 - by 30 the bones have already developed
accept '30 year-old male has stopped growing'
- (c) any **one** from 1
- a pregnant female supplies the baby with protein
accept 'she supplies the baby'
 - a pregnant female needs protein for herself and the baby
accept 'she needs it for herself and the baby'
 - the baby needs protein
- (d) any **one** from 1
- a 15 year-old female menstruates
 - a 15 year-old female has periods

[7]